

CASE HISTORY

FEBRUARY 2012



SOLUTIONS FOR EXTREME ENVIRONMENTS

POLYMER GROUP LTD

RHINO LININGS  
ARMAFLOOR 500

# APOLLO HEALTH CENTRE

**PROJECT:** Walkway Refurbishment  
**Owner:** Apollo Health Centre Auckland  
**Project Specification:** Tufflex membrane  
 Endurabond UHC  
 Rhino Linings Decorative Quartz  
 Rhino Linings ArmaFloor 500  
**Contract Applicator:** Polymer Group Ltd, Contracting Division.  
**Completion Date:** February 2012

Apollo Health Centre in Albany Auckland offers urgent care medical services on the North Shore.

The 300 m<sup>2</sup> of ground concrete walkways at this design and build complex, while aesthetically pleasing, proved to be slippery and dangerous with a number of visitor falls calling for urgent redress.

Polymer Group supplied and installed the Rhino ArmaFloor decorative quartz floor topping, chosen not only for its attractive non-skid finish, but also because there was an urgency associated with the project having to be installed over one day and ready for pedestrian traffic the following day.



The concrete suspended floor had cracks that were continually moving. To resolve this, a thin coat of flexible membrane was applied to the concrete floor, followed by a resilient high build polyurethane with decorative quartz broadcast into it which was then sealed with Armafloor polyaspartic topcoat.

The finished decorative non-slip coating is visually pleasing and has eliminated client and visitor slips and falls at the centre.





SOLUTIONS FOR EXTREME ENVIRONMENTS

### POLYMER GROUP LTD

Head Office & Manufacturing Facility  
62 Stonedon Drive  
East Tamaki  
AUCKLAND 2013

Phone: 09 274 1400  
Fax: 09 274 1405

E-mail: sales@polymer.co.nz

Contacts: Phil Back  
Product Manager—Polyurethanes  
back@polymer.co.nz  
Zander Olivier  
Technical Sales Representative  
olivier@polymer.co.nz  
Lorne Crowley  
Technical Director  
crowley@polymer.co.nz  
Ron Avery  
General Manager Contracting  
avery@polymer.co.nz

**Chemically Engineered  
Solutions for Extreme  
Environments**

Visit our new website  
[www.polymer.co.nz](http://www.polymer.co.nz)

Polymer Group Ltd is an applied technology company comprising a team of industrial chemists, engineers and qualified coatings inspectors which has served New Zealand industry for over 25 years.

**Property Asset Protection** is the company's major focus, providing proven, durable solutions for the **protection of structural steel, concrete and timber** structures.

**Wear resistant, Anti-corrosive Protection Systems** are engineered to provide optimum performance and extended maintenance intervals.

**Surface coating Technology Advances** offer multiple choices to the asset manager and civil engineer who is seeking long term solutions and minimum downtime, but not always able to provide an optimum application time frame.

**Maintenance Assessments and specification Options** give the client the opportunity to inspect and discuss the asset with experienced personnel, taking into consideration the exposure environment, past performance of any existing protection systems, available downtime and other constraining influences.

**Sole Responsibility Material Supply and Application Contracts** provide the client with further reassurance that their protection/maintenance systems are supplied and installed by a Quality Assured, company.

## Solutions for your Extreme Environment

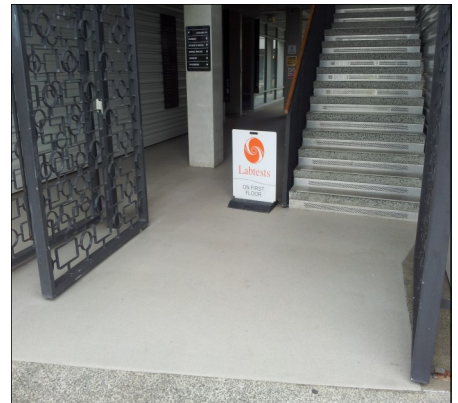


# HUNTSMAN

Enriching lives through innovation



### DUR-A-FLEX



## Endurathane®

## Enduracoat®

## Endurabond®

## Enduragrip®

## Enduracryl®

## Castorthane®

- Dur-A-Flex Floor Coatings and Toppings
- Car Park Deck Waterproofing Membranes
- Endurathane Spray Applied Polyurea Membranes for secondary containment and tank linings.

- Rhino Linings® Polyurethane Coatings
- Enduracoat® Linings for sewage & wastewater
- Stirling Lloyd® Bridge Deck Waterproofing Systems